

SUSPENDED FRAMING DETAILS

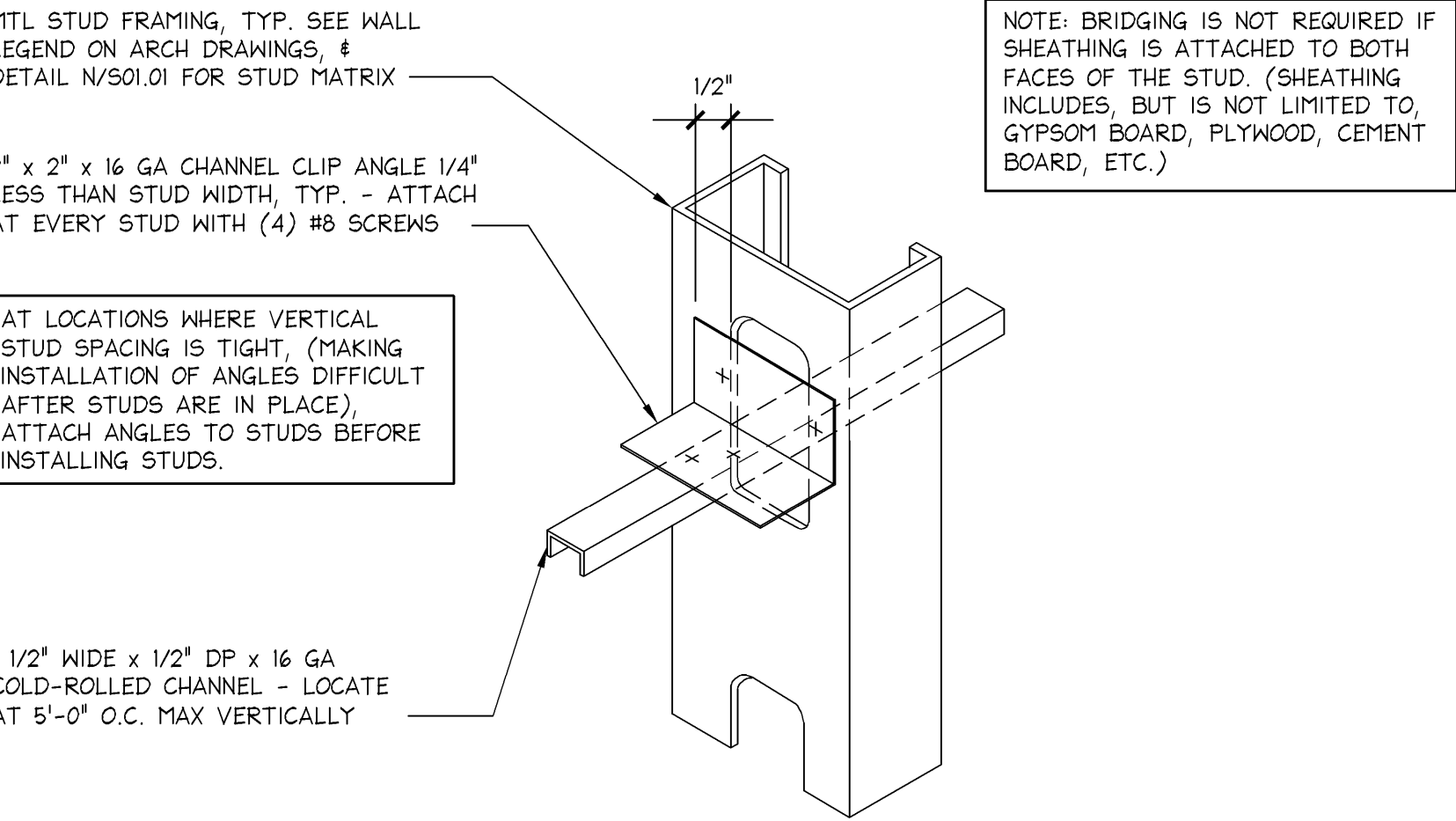
1 1/2" = 1'-0"
00D-S031-800-DETL
08.15.11

BOX HEADER CONNECTION

1 1/2" = 1'-0"
M
08.15.11

COLUMN CONNECTIONS

N.T.S.
H
08.15.11



BRIDGING DETAIL

N.T.S.
00D-S031-800-DETL
08.15.11

DEFLECTION TRACK SEISMIC DESIGN CATEGORIES A, B & C

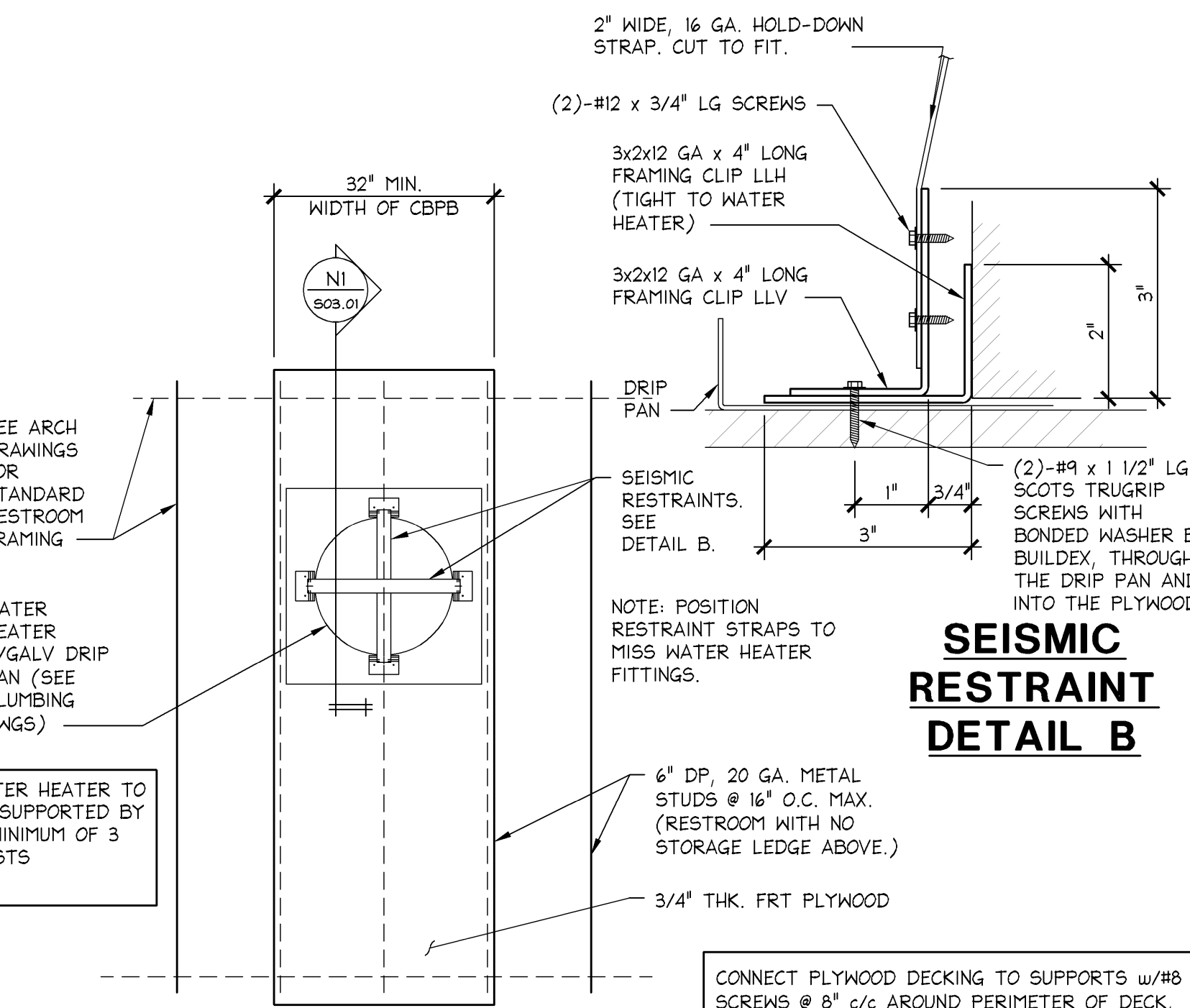
3" = 1'-0"
L
08.15.11

LIGHTGAGE LINTEL DETAIL

1" = 1'-0"
G
08.15.11

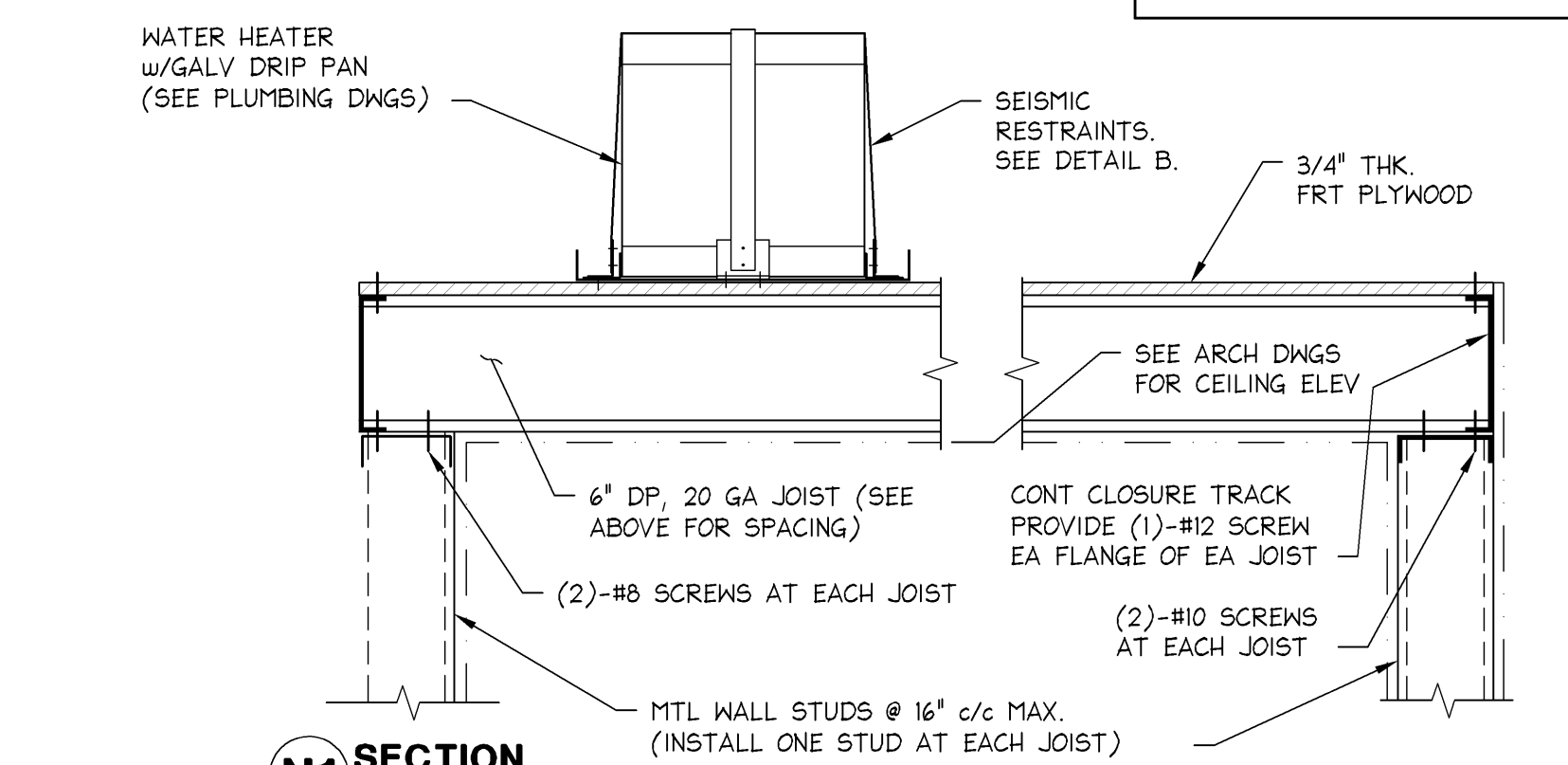
LIGHTGAGE BOX COLUMN DETAIL

3" = 1'-0"
C
08.15.11



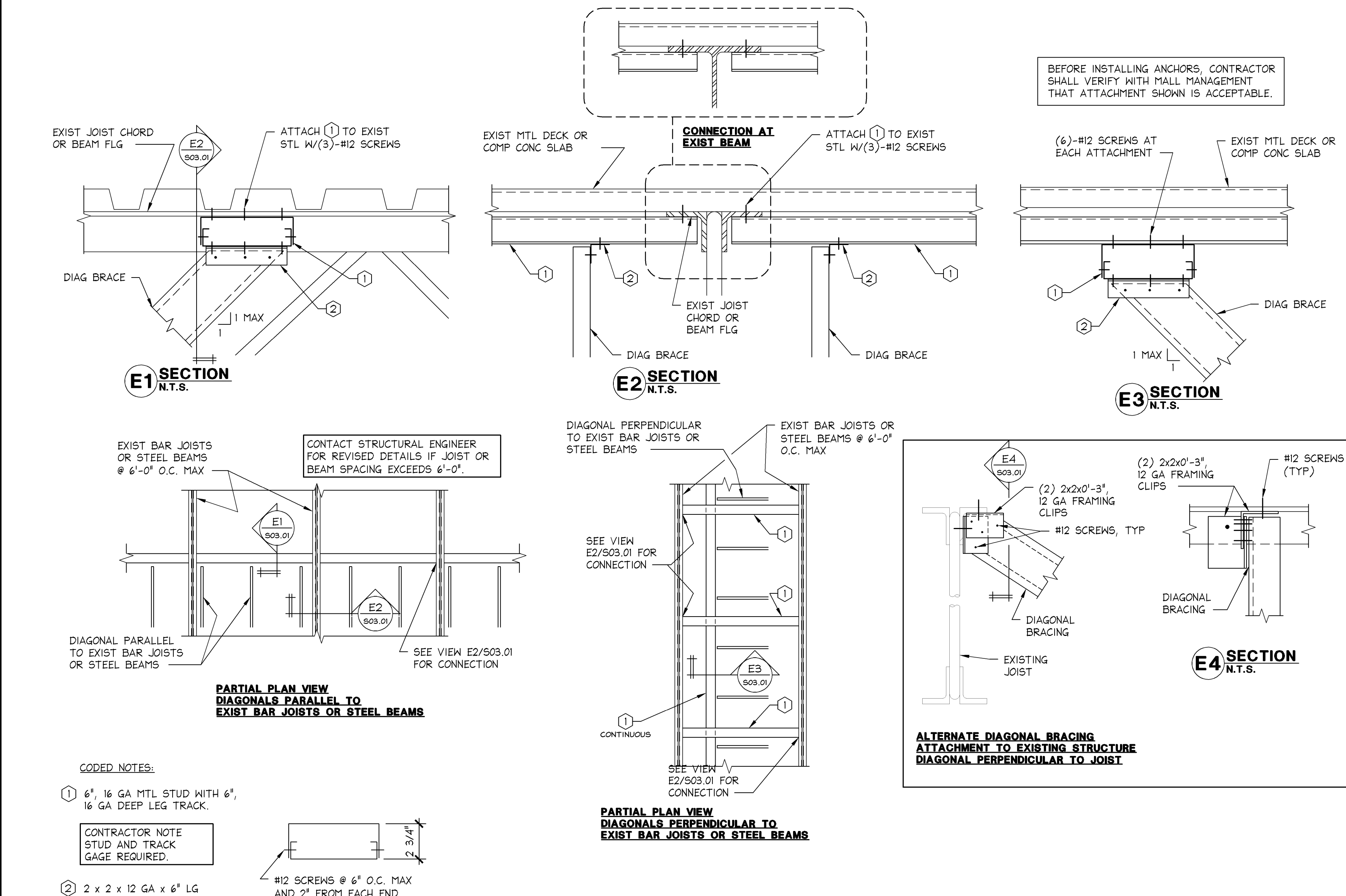
PLAN VIEW RESTROOM WITH NO LEDGE ABOVE

SEISMIC RESTRAINT DETAIL B

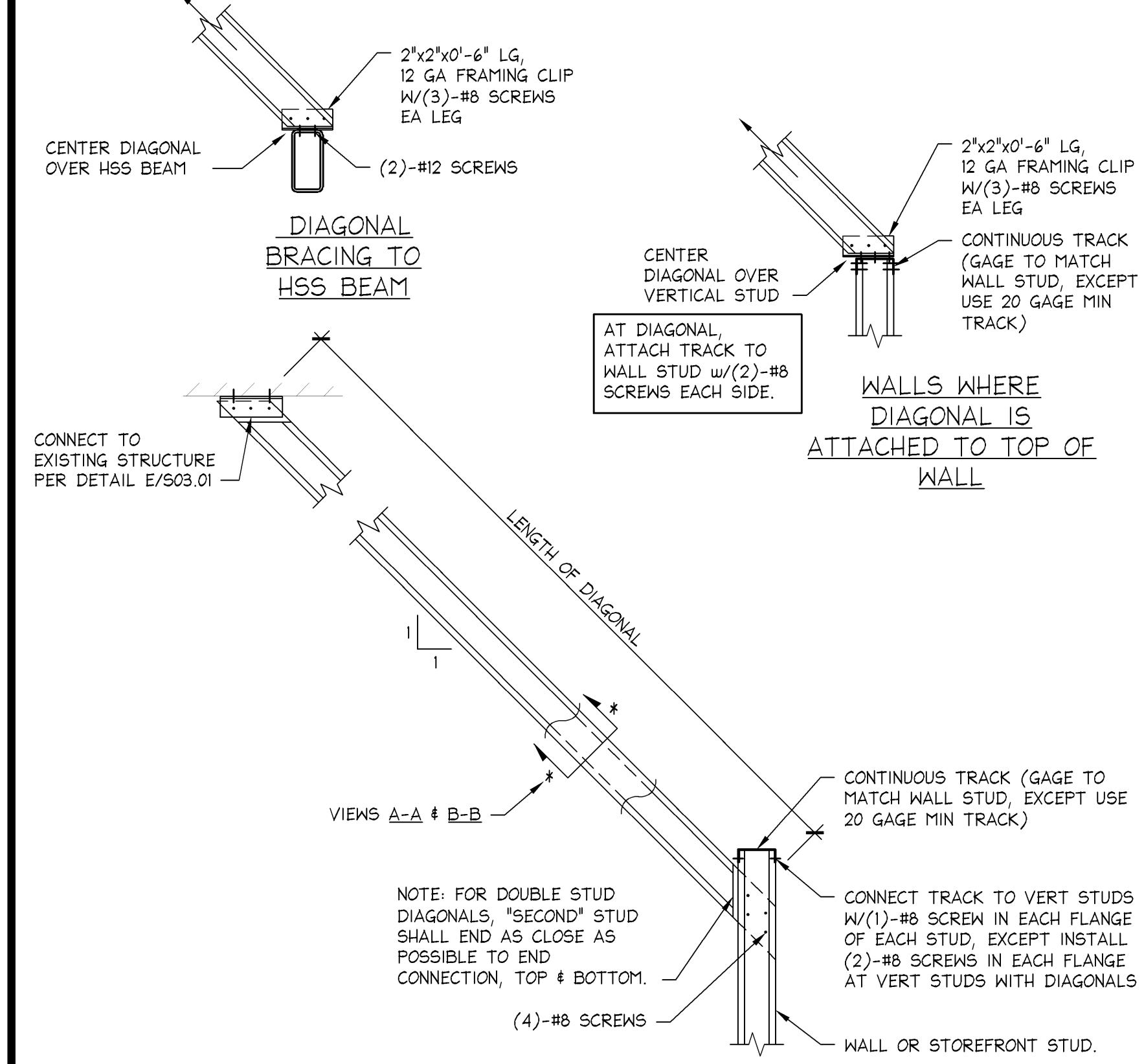


WATER HEATER SUPPORT ABOVE RESTROOM SEISMIC DESIGN CATEGORIES C, D, E & F

1" = 1'-0"
00D-S031-N03-PLAT
08.15.11



TYPICAL DIAGONAL BRACE CONNECTIONS ATTACHMENT TO EXISTING BAR JOISTS OR STEEL BEAMS



20 GA. DIAGONAL BRACING OPTIONS	
<p>DIAGONAL LENGTH- UP TO 12'-0"</p> <p>SINGLE 3 5/8" 20 GA. DIAGONAL</p> <p>VIEW A-A</p>	<p>DIAGONAL LENGTH- 12'-1" TO 20'-0"</p> <p>DBL 3 5/8" 20 GA. STUDS WITH 1 5/8" WIDE FLANGES</p> <p>VIEW B-B</p>
SPACING OF DIAGONAL BRACING INTERIOR PARTITIONS = 60' O.C. MAX STOREFRONT FRAMING = 48' O.C. MAX	* CONTACT STRUCTURAL ENGINEER FOR LENGTHS LONGER THAN 20'-0".

TYPICAL DIAGONAL BRACING SEISMIC DESIGN CATEGORY C

1" = 1'-0"
05D-S031-A02-BRAC
10.15.12